

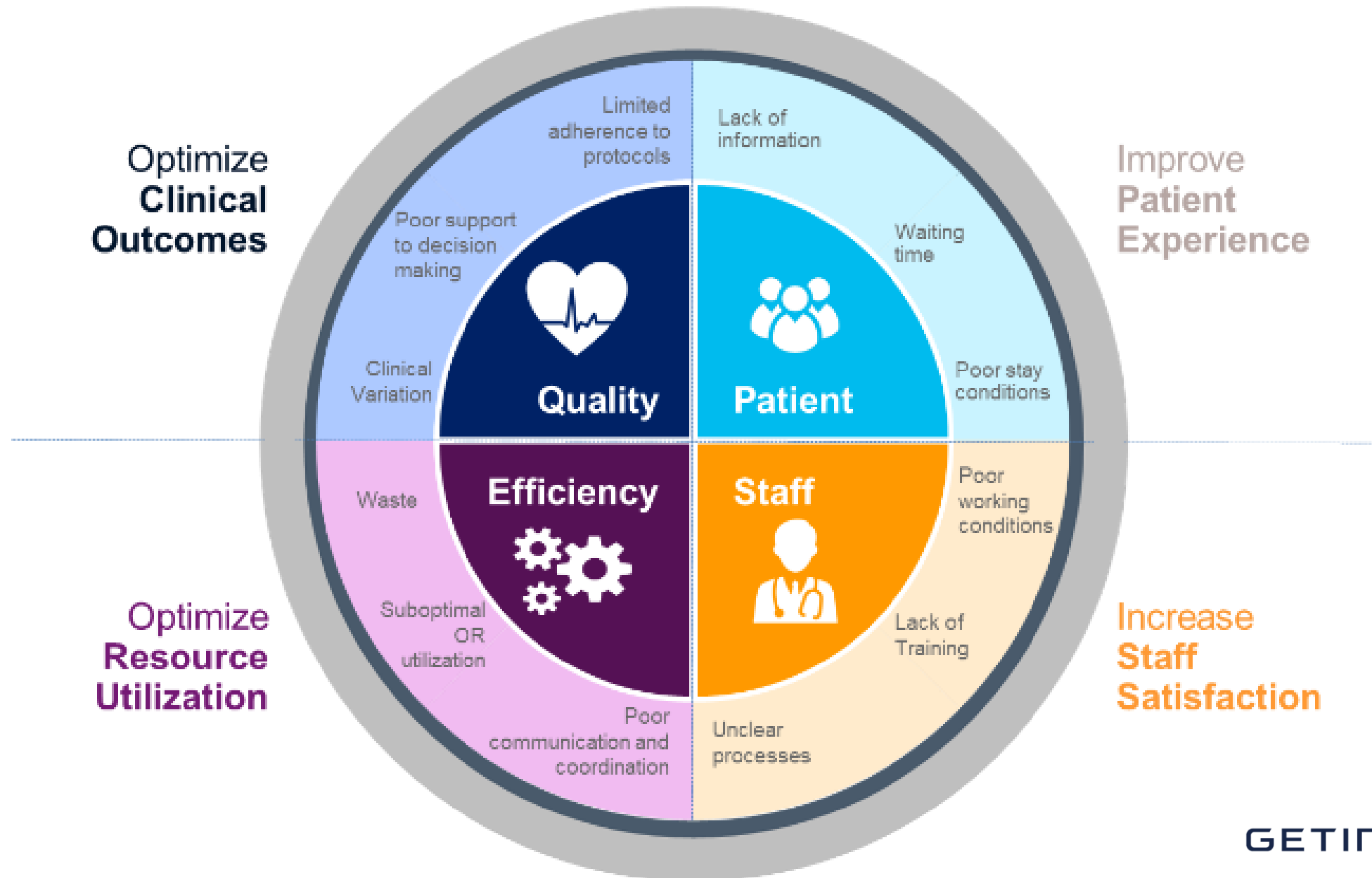
Digital adoption supporting surgical optimisation

SurgTech2025

Gareth Evans
Commercial Strategy Director Getinge UKI & Ireland

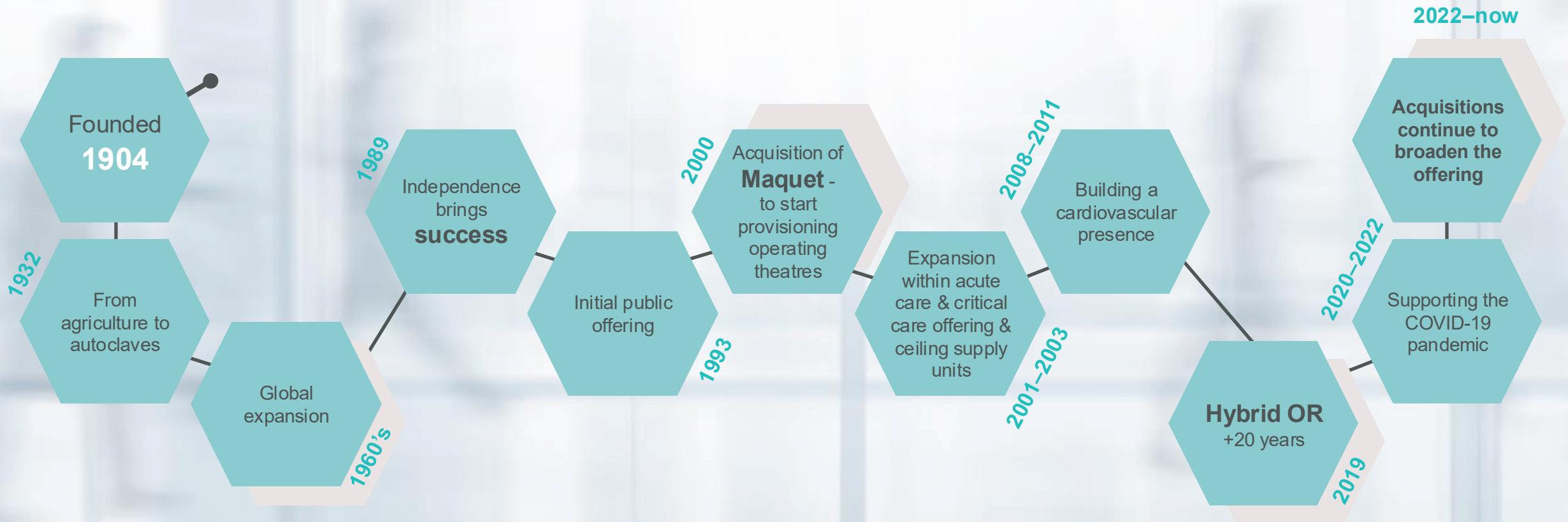
GETINGE 

Hospital challenges globally



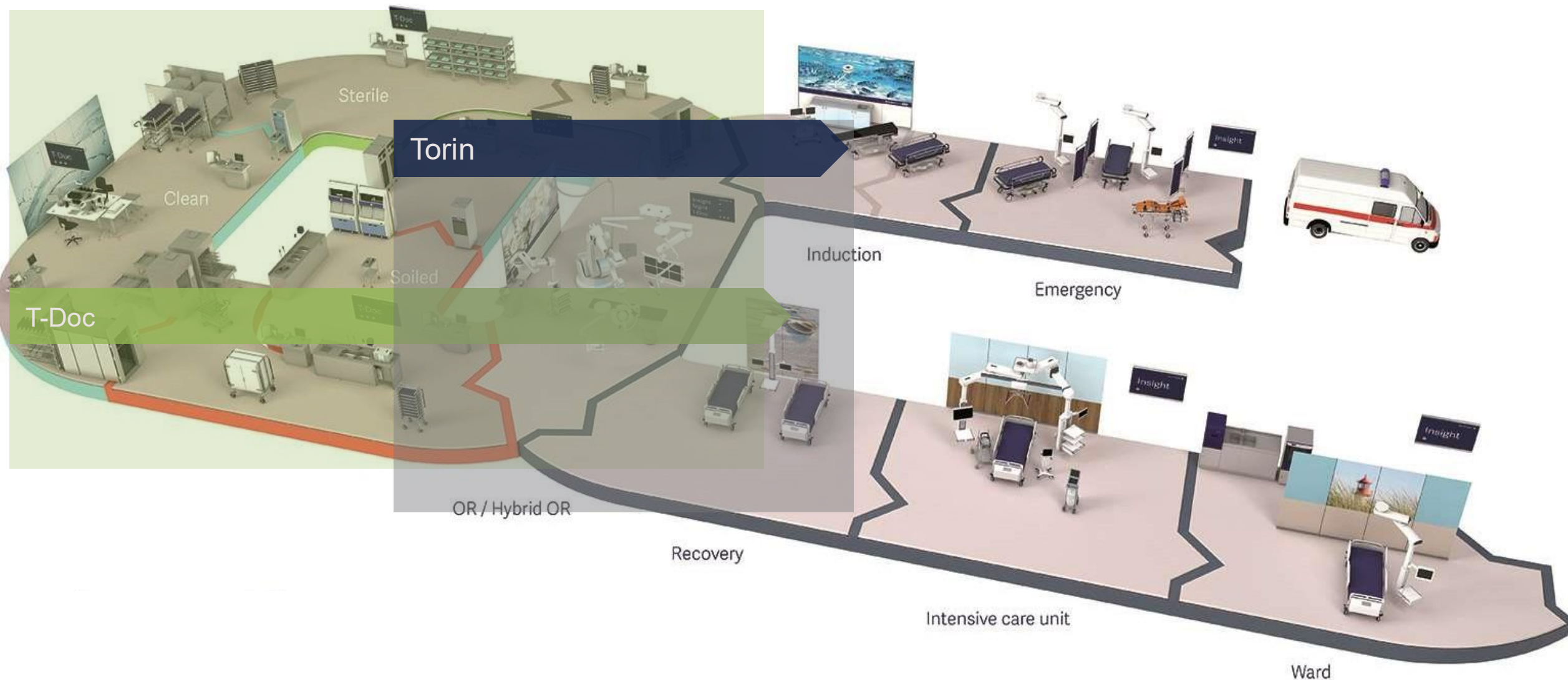
This is Getinge

Making life-saving technology accessible for more people



Getinge flow of products and digital integration

Using digital tools to provide greater efficiency





Torin Theatre Management System

- ❑ Validated and conflict-free surgery plan
- ❑ Rescheduling support to accommodate deviations
- ❑ Complete surgery documentation
- ❑ Unique data analytics for decision support
- ❑ Integration with existing hospital IT solutions

OR coordinator view

Manage the complexity in your surgical department

Filter by departments or rooms

Conflict checking

Current time

Plan vs. actual

The screenshot displays the GETINGE Surgery calendar interface. On the left, there is a sidebar with 'Search criteria' (View: Operating room, Spec: General Surgery, Area: Not selected, Theatres: Selection, Date: 06/04/2024), 'Actions' (Print surgery appointments, Confirm surgical schedule, Edit message of the day, Assign theatre staff, Assign theatres, Theatre ranking list), 'Service standards' (Adipositas, Vascular, Abdominal), and 'Conflicts (2)' (C-Arm 3 [04.06.12:20 - 15:00Hour], Dean, Libby [04.06.13:40 - 15:40Hour]). The main area shows a table of surgical cases with columns for Theatre, Time, Patient(s), Case num..., Case type, Urgency, AN, Surgery, Article, Devices, Oper. Dept., Surgery name, Status, Surgeons / As..., Anaesthe..., and Other. Below the table is a Gantt chart view showing the timeline of these cases. A red vertical line indicates the 'Current time' at approximately 11:00. The chart uses different colors to represent 'Plan vs. actual' status, with green for planned and blue for actual. The chart also shows resource utilization for various theatres (OR 1, OR 2, OR 101, OR 102, OR 103) and includes a 'Conflict checking' section on the left sidebar.

Prediction of surgery times

Using Artificial Intelligence

30%

higher accuracy
compared to standard
duration ¹

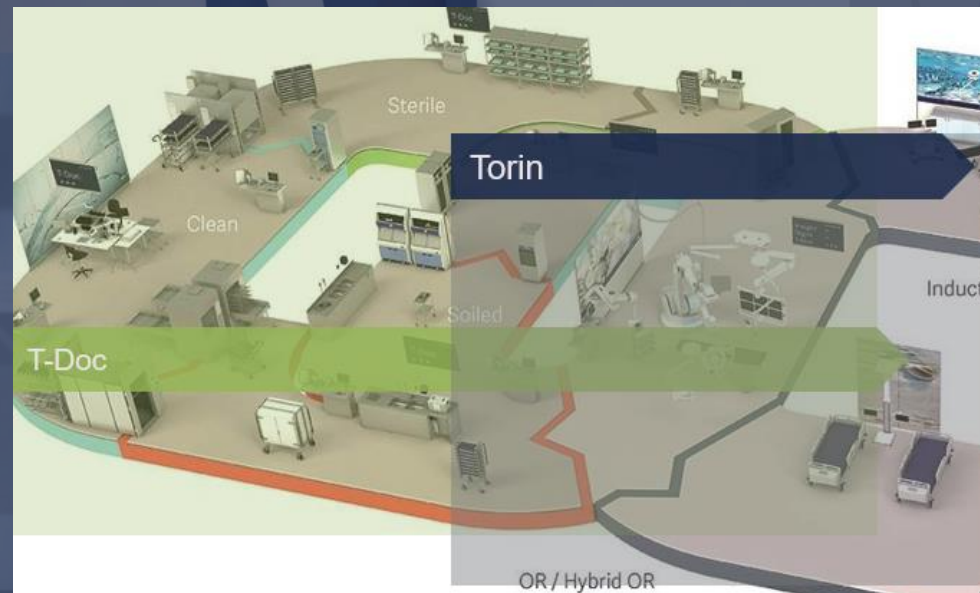
39%

increase in correctly
planned surgery ¹

6%

improvement of
the OR utilization ¹

Digital platforms Integration



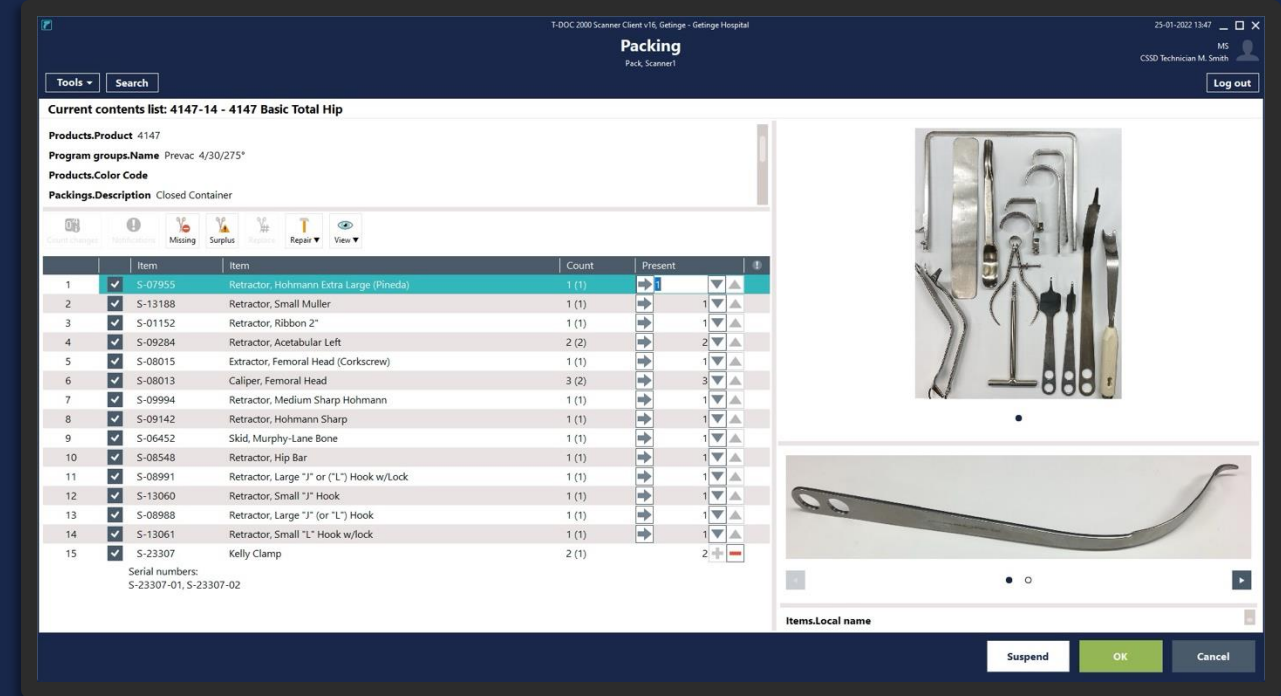
T-DOC Sterile Supply Management

Correct and on-time delivery of surgical instruments

- ✓ Optimized resource utilization
- ✓ Complete traceability
- ✓ Consistent quality and compliance

Offering the following features

- Traceability of patient-to-instrument interactions
- Reduced risk of errors due to process automation
- Accurate handling of sterile goods with visual instructions
- Instrument and stock management
- Comprehensive reporting for increased control



60%
less staff turnover¹

99,5%
on-time
and correct delivery¹

47%
extra trays per hour¹

85%
less staff overtime¹



Outcomes of a Nordic
CSSD improvement project ¹

35%
lower production costs¹

Digital adoption considerations

Understanding the problem

Planning and collaboration

Integration with systems

Outcome evidence (Value Based Procurement)

A photograph of a person lying in a hospital bed, appearing to be asleep or resting. A caregiver's hand is gently holding the patient's hand. The scene is dimly lit, with medical equipment visible in the background. The image has a blue tint and is overlaid with the text 'Thank you'.

Thank you